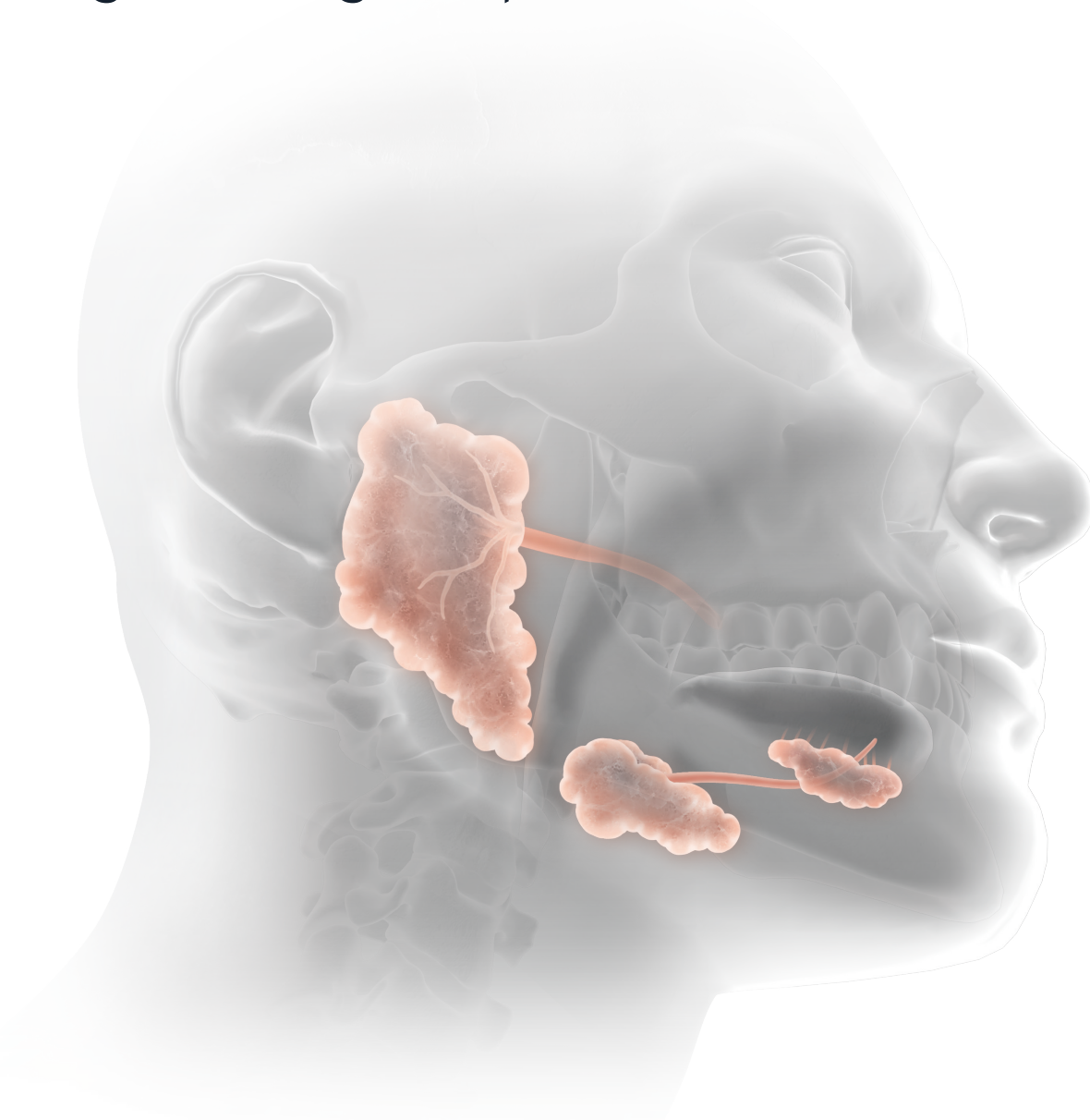


Sialendoscopy

SALIVARY DUCT ACCESS & INTERVENTION

Minimally invasive solutions
designed for gland preservation



Access & Treatment Essentials

Everis™

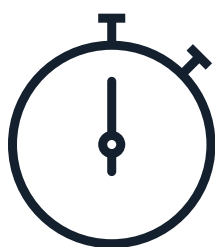
Interventional Sialendoscopy

The minimally invasive treatment of obstructive salivary gland disease

ACCESS
PRODUCTS →

INTERVENTION
PRODUCTS →

ORDERING
INFORMATION →



REDUCED
RECOVERY TIME



NO
INCISION



GLAND
PRESERVATION

Sialendoscopy offers a variety of advantages to the patient, including reduced recovery time, no incision or subsequent scarring, minimized potential for nerve damage, preservation of the salivary gland, and early return to a normal diet.^{3, 12}

Sialendoscopy allows stones and strictures to be managed in office with a low risk of major complications to the patient compared to open surgical procedures.¹

*A combined approach may be necessary depending on stone size, mobility, and clinical judgment.

Salivary duct access tools allow me to gain and maintain access to the duct, which gives me much greater control throughout the entire procedure.

Jack Kolenda, MD

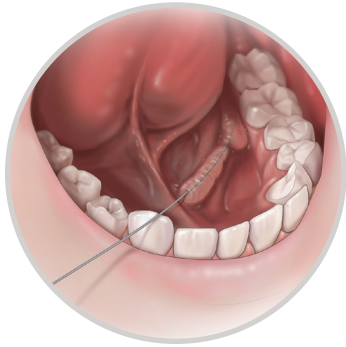
Chief, Department of Otolaryngology
Oakville-Trafalgar Memorial Hospital
Oakville, Ontario

Everis continually collaborates with physicians to improve procedures, including partnering with leading physicians to create a comprehensive line of salivary duct access and interventional products that are designed to maintain access throughout the procedure and treat obstructive salivary gland disorders. This line of products is designed to help reduce trauma for the patient and increase efficiency with every step.

Dr. Kolenda is the inventor of the Kolenda Salivary Access Introducer Set and received a royalty payment to use this technology.

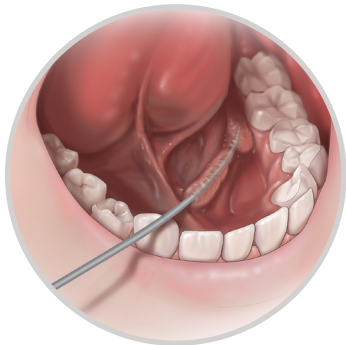
ACCESS

Gain and maintain access to the salivary duct throughout the entire procedure.



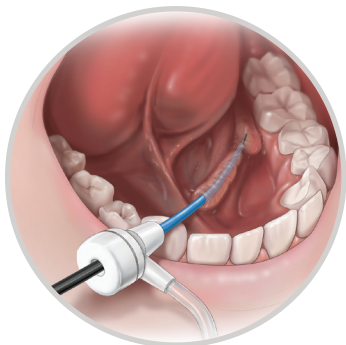
Wire Guide

Access the salivary duct through the papilla.



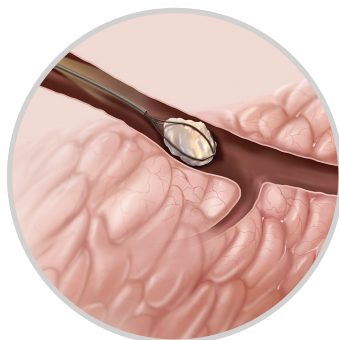
Salivary Access Dilator Set

Introduce a series of flexible dilators over the wire guide to expand the papilla and prepare the salivary duct for the introduction of procedural instruments.



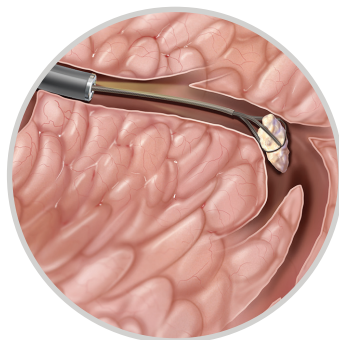
Kolenda Salivary Access Introducer Set

Create an open working channel into the salivary duct by passing the sheath over the wire guide. The sheath is also designed to protect the ductal wall as you insert and remove procedural instruments.



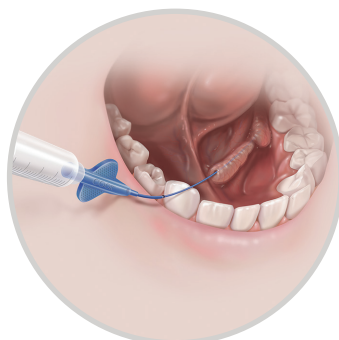
NCircle® Tipless Salivary Stone Extractor

Insert the NCircle® nitinol basket into the duct to remove salivary stones and fragments. The stone extractor has a tipless configuration that allows you to position the basket against the mucosal lining.



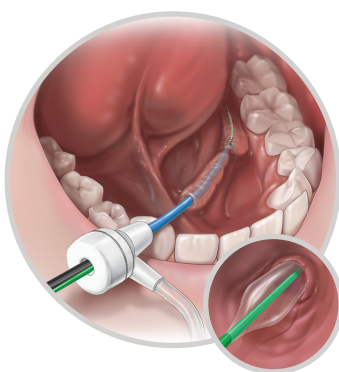
NGage® Salivary Stone Extractor

Insert the NGage® nitinol basket into the duct to remove salivary stones and fragments. The stone extractor works as both a basket and a grasper.



SialoCath® Salivary Duct Catheter

Insert the catheter over a wire guide or through the Kolenda Salivary Access Introducer to irrigate the submandibular or parotid salivary ducts to flush stone fragments.



Advance® Salivary Duct Balloon Catheter Set

Once you have created a working channel in the duct, insert the balloon catheter over a wire guide and use it alongside a sialendoscope for direct visualization to dilate at the stricture site.

ORDERING INFORMATION

Wire Guide

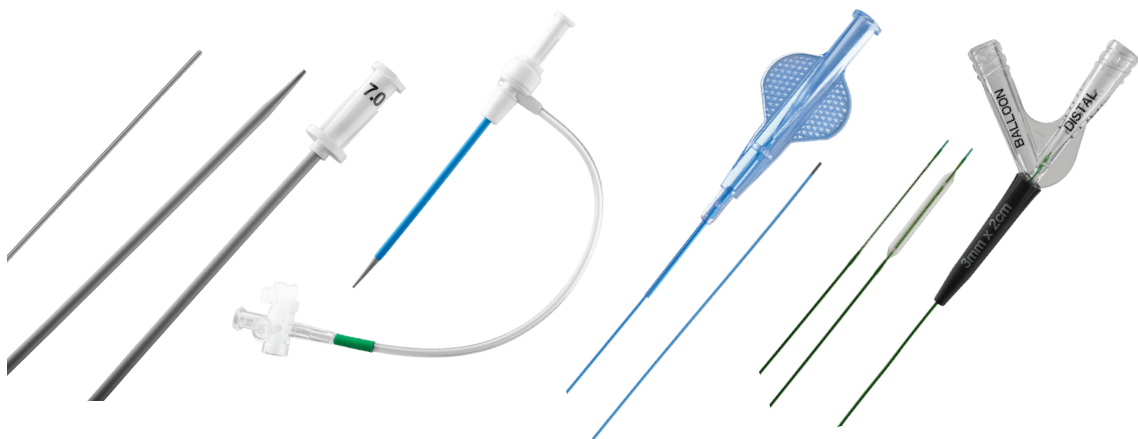
Order Number	Reference Part Number	Wire Guide Diameter inch	Wire Guide Length cm	Tip Configuration
G02274	C-SF-15-50	0.015	50	Straight

Salivary Access Dilator Set

Order Number	Reference Part Number	Dilator Fr	Dilator OD mm	Dilator OD inch
G24131	SDDS-18-20-HC	4.0	1.40	0.055
		5.0	1.67	0.066
		6.0	2.0	0.079
		7.0	2.33	0.092

Kolenda Salivary Access Introducer Set

Order Number	Reference Part Number	Introducer ID mm/inch	Wire Guide Diameter inch	Sheath Length cm
G24129	SDAS-6.0-18	2.21/0.087	0.018	5.5
G24132	SDAS-5.0-18	1.88/0.074	0.018	5.5



NGage® Salivary Stone Extractor

Order Number	Reference Part Number	Catheter Fr	Catheter Length cm	Basket Diameter mm
G23798	SSEB-1.7-115-8	1.7	115	8

NCircle® Tipless Salivary Stone Extractor

Order Number	Reference Part Number	Catheter Fr	Catheter Length cm	Basket Diameter mm
G23797	SSEB-1.5-115-10	1.5	115	10

SialoCath® Salivary Duct Catheter

Order Number	Reference Part Number	Catheter OD mm/inch	Catheter ID mm/inch	Compatible Wire Guide Diameter inch	Compatible Catheter Length cm	Tip Configuration
G35166	SDC-2.2-20	0.74/0.029	0.53/0.021	0.018	15	Straight

Advance® Salivary Duct Balloon Catheter Set

Order Number	Reference Part Number	Wire Guide Diameter inch	Inflated Balloon Diameter mm
G34991	SDBS-14-30-1.5-2	0.014	1.5
G34992	SDBS-14-30-2.0-2	0.014	2.0
G34993	SDBS-14-30-2.5-2	0.014	2.5
G34994	SDBS-14-30-3.0-2	0.014	3.0

References

1. Nahlieli O, Nakar LH, Nazarian Y, et al. Sialendoscopy: a new approach to salivary gland obstructive pathology. *J Am Dent Assoc.* 2006;137(10):1394–1400.
2. Carta F, Farneti P, Cantore S, et al. Sialendoscopy for salivary stones: principles, technical skills and therapeutic experience. *Acta Otorhinolaryngol Ital.* 2017;37(2):102–112.
3. Achim V, Light TJ, Andersen PE. Gland preservation in patients undergoing sialendoscopy. *Otolaryngol Head Neck Surg.* 2017;157(1):53–57.

© indicates U.S. trademark registration. All trademarks and/or images are the property of their respective owners or holders.



Sialendoscopy

SALIVARY DUCT ACCESS & INTERVENTION

For more detailed product information, including the Instructions for Use, which contains the indication statement, contraindications, precautions, and potential complications, visit www.everismedical.com.



Everis Medical

555 East Eliza St, Ste. A
Schoolcraft, MI 49087 USA
t: 888 902 2239
www.everismedical.com

Printed in U.S.A.
DOC 6570 Rev 1
Copyright © 2025 Everis

Everis™